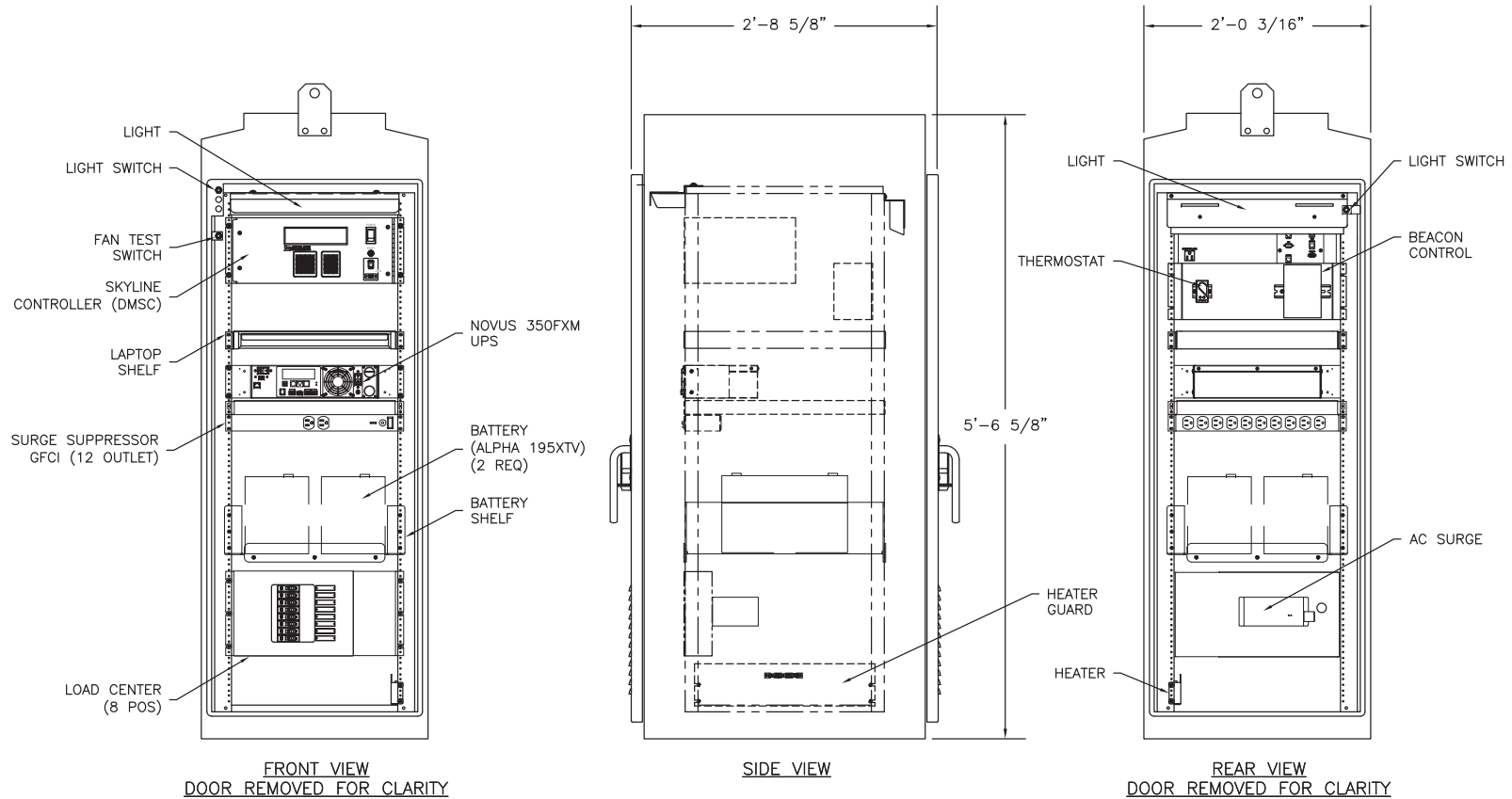





6831 OF ATTACHMENT F

NOTES:

1. PART/ASSEMBLY SHALL COMPLY WITH ALL APPLICABLE SKYLINE WORKMANSHIP STANDARDS.
2. ALL HOUSING SURFACES ARE NATURAL ALUMINUM MILL FINISH, UNLESS NOTED OTHERWISE.
3. ALL EXPOSED HARDWARE AND FASTENERS ARE STAINLESS STEEL OR ALUMINUM.

REVISIONS			
REV.	DESCRIPTION	DATE	APPROVED
01	SUBMITTAL RELEASE, MAG	10/26/21	JAB



MODEL NUMBER:		332 CONTROL CABINET							
SIGN WEIGHT: 520 LBS EST	ALL DIMENSIONS: FEET/INCHES [mm]	SIGN AREA: DISPLAY AREA:	 332 CONTROL CABINET GROUND MOUNT						
<small>THIS DRAWING/DOCUMENT (AND ALL SUBSEQUENT SHEETS IF ANY) CONTAINS PROPRIETARY INFORMATION EXCLUSIVE TO SKYLINE PRODUCTS, INC. AND SHALL NOT BE USED, REPRODUCED, COPIED, DISCLOSED, OR EXHIBITED IN WHOLE OR IN PART FOR MANUFACTURE, PROCUREMENT OR FOR ANY OTHER PURPOSE EXCEPT AS SPECIFICALLY AUTHORIZED IN WRITING BY SKYLINE PRODUCTS, INC.</small>		<table border="1"> <tr> <td>APPROVALS</td> <td>DATE</td> </tr> <tr> <td>DRAWN MAG</td> <td>10/26/21</td> </tr> <tr> <td>CHECKED JAB</td> <td>10/26/21</td> </tr> </table>		APPROVALS	DATE	DRAWN MAG	10/26/21	CHECKED JAB	10/26/21
APPROVALS	DATE								
DRAWN MAG	10/26/21								
CHECKED JAB	10/26/21								
			REV. 01 SCALE NTS SHEET						